



R3,275,000

HEADS RESIDENTIAL PROPERTY

Harfield Village, Cape Town



Property Features

Interior

Bedrooms 2
 Bathrooms 2
 Kitchens 1
 Recep. Rooms 2

Exterior

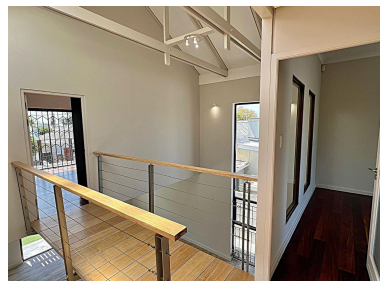
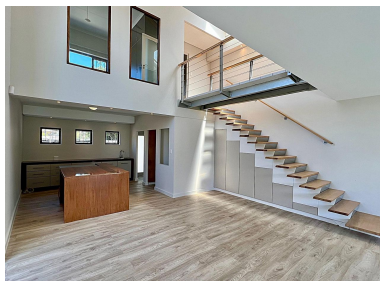
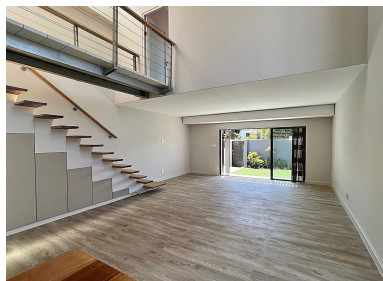
Security Yes
 Views Yes

Sizes

Floor Size 121m²
 Land Size 163m²

Financial

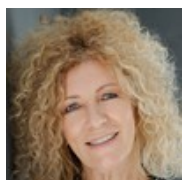
Rates R 1279.23



Monthly Repayments

R 33,804 (Estimated)

Disclaimer : Whilst every effort has been made to ensure the accuracy of the information contained herein, no liability can be accepted for any errors or omissions and the Tenant or Buyer is advised to verify the facts prior to making any offer to lease or purchase.



Teresa Curran

Tel (021) 683 7029
 Mobile 082 685 2292
 Email teresa@headsproperty.co.za



Jonathan Bronkhorst

Tel (021) 683 7029
 Mobile 083 603 0004
 Email jonathan@headsproperty.co.za



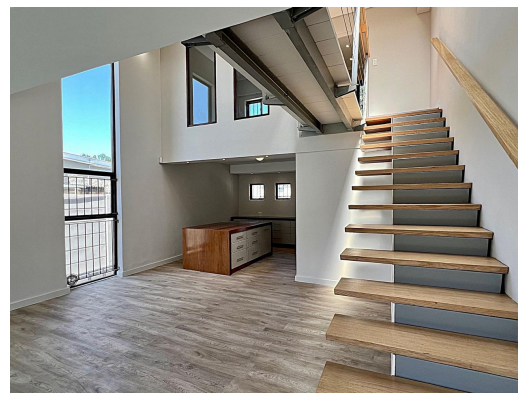
R3,275,000

HEADS RESIDENTIAL PROPERTY

Harfield Village, Cape Town

2 bed double storey home!

Modern living in this spacious architect designed double storey home with a mountain view! Perfectly positioned with nearby coffee shops, deli's, restaurants, shopping centres and some lovely parks Harfield Village has to offer. Medical and veterinary facilities too! North facing with beautiful light makes the home welcoming and invites you indoors where you will be captivated by the double volume living space Entertainers' living and dining rooms have good flow to the sunny manageable garden with a built in braai and outdoor storage cupboards. A wooden floating staircase with concealed cupboards underneath as an added bonus. The sociable centre island in the kitchen takes pride of place and is fitted with cupboards, under counter space for stools, and a freestanding 5 plate gas cooker/electric oven, making it the heart of the home for family and friend gatherings. Fitted pull out drawers and cupboards and a handy vegetable sink for your convenience The highlight is the separate scullery and laundry room, plumbed for dishwasher, washing machine and space for a tumble dryer as well as more than enough extra storage! The upstairs level provides the sleeping quarters made up of two double bedrooms separated by an architecturally pleasing walkway. Both rooms have ample built in cupboards The family bathroom offers a large bath, vanity and toilet while the main en suite has a shower, basin and toilet. The main bedroom has the most stunning views of the mountain, a fabulous way to to start your day as you gaze out from your bed or the wooden deck Parking is behind a two automated gates for two cars Security includes a Paradox burglar alarm and electric fencing VIEW BY APPOINTMENT



Web Ref RL1647

www.headsproperty.co.za